



HEARTSINE GATEWAY™

WITH LIFELINKCENTRAL™ AED PROGRAM MANAGER



HeartSine Gateway enables AED (Automated External Defibrillator) program managers to readily manage a fleet of HeartSine® AEDs across a single or multiple locations by providing remote readiness information about each AED. When integrated into a HeartSine samaritan® PAD 350P, 360P or 500P), HeartSine Gateway communicates, via a Wi-Fi® connection to LIFELINKcentral™ AED Program Manager or LIFENET® System, the results of the weekly AED self-test including if the AED battery is low.

Features:

- Wireless connectivity
- Self-monitoring
- Backward compatible
- Low cost of ownership

READINESS MADE EASY

Connected. Communicates via Wi-Fi with LIFELINKcentral AED Program Manager or LIFENET System to enable AEDs to be managed across a single or multiple locations.

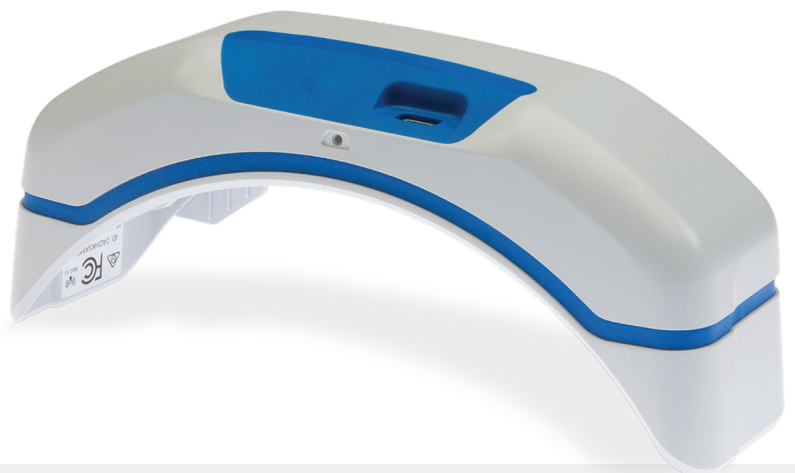
LIFELINKcentral AED Program Manager. Monitors AED programs by tracking AED readiness status, Pad-Pak™ expirations, CPR/AED training certificates and more.

Self-monitoring. Independently monitors its own readiness, sending email alerts when it reaches low battery power or is out of operational temperature range.

MADE FOR YOU

Backward compatible. Compatible with many installed HeartSine SAM 350P, SAM 360P and SAM 500P AEDs, or provided as part of the HeartSine Connected AED solution.

Easy set up. Straightforward and hassle-free set-up with the HeartSine Gateway configuration tool.



SIMPLE TO OWN

Self-powered. Preserves the AED battery life as it is self-powered using off-the-shelf batteries.

Protection in challenging environments. Offers the same virtually unmatched protection against dust and water as the AED.



TECHNICAL SPECIFICATIONS

PHYSICAL

WITH BATTERIES INSTALLED

| | |
|---------|---------------------|
| Size: | 17 cm x 7 cm x 5 cm |
| Weight: | 1.58kg |

CONTROLS

| | |
|---------------|--|
| Power button: | When off and pressed, turns on the HeartSine Gateway, when held for six seconds, places HeartSine Gateway into set-up mode, and when on and pressed, initiates a manual check-in |
|---------------|--|

CONNECTIONS

| | |
|----------------------|---|
| Data port connector: | Connects HeartSine Gateway to the HeartSine AED |
| Micro USB port: | Enables connection to Saver EVO™ software via a Micro USB cable |

ENVIRONMENTAL

| | |
|-----------------------------|---|
| Operating Temperature: | 0°C to 50°C |
| Transportation Temperature: | -10°C to 50°C for up to two days. If the device has been stored below 0°C, it should be returned to an ambient temperature between 0°C to 50°C for at least 24 hours before use |
| Relative Humidity: | 5% to 95% (non-condensing) |
| Water Resistance: | IEC 60529/EN 60529 IP56 |
| Altitude | 0 – 4,575 meters |
| Shock | MIL STD 810F Method 516.5, Procedure I |
| Vibration: | MIL-STD 810F: 2000 Method 514.5 Procedure 1 categories 4 & 7 |
| EMC: | EN 60601-1-2 |

USER INTERFACE

| | |
|-------------------|---|
| Status indicator: | Provides information on the status of HeartSine Gateway |
| Removal tool: | Disconnects HeartSine Gateway from a HeartSine AED |

BATTERY

| | |
|--------------------------------|---|
| Type: | Lithium Manganese Dioxide |
| Type No: | 6205 |
| Designation IEC: | CR 17345 |
| Quantity: | 4 |
| Weight (per battery): | 17g |
| System: | Lithium Manganese Dioxide / Organic Electrolyte |
| UL recognition: | MH 13654 (N) |
| Nominal voltage (per battery): | 3V |
| Typical capacity load: | 100 Ohm, at 20°C, 1550 mAh down to 2V |
| Volume: | 7cm ² |

COMMUNICATIONS

Wireless 802.11 b/g/n data transfer to LIFELINKcentral AED Program Manager or LIFENET System. USB connection to Saver EVO software through Micro USB port

COMPATIBILITY

Compatible with all HeartSine samaritan PAD models manufactured during or after 2013 (with serial number beginning with "13" or above)